



## Expand your menu

Discover our range of unique cooking **accessories** designed specifically for your Merrychef high speed oven.



Expanding your opportunities

[www.merrychef.com](http://www.merrychef.com)



Our unique range of accessories for the Merrychef high speed oven have been designed for you to get greater flexibility out of your oven. The accessories can help you expand your menu by allowing you to cook a wider variety of meals. Placing food on liners and trays will help keep the ovens clear from food and grease, significantly reducing cleaning time.

All Merrychef accessories are certified food safe and approved for use in our ovens. They are either made from 100% PTFE or have been specifically coated in a material that reduces or eliminates oven arcing which may occur with unapproved metal accessories.

Our range of brightly coloured cooking trays not only look great, but also allow you to have specific colours for certain foods, i.e. green for vegetarian meals. Made from 100% PTFE, they are easy to wipe clean in-between programmes and are dishwasher compatible.

As the Merrychef range of ovens have different cavity sizes, we have some accessories that are specific to each oven. However, the NEW Signature range will suit most of our ovens and provide you with the broadest range of applications. They are highly durable, long-lasting and dishwasher compatible.

Carefully storing and regularly cleaning your accessories will significantly improve their useful life.



To view the full range go to:

[www.merrychef.com/products/accessories](http://www.merrychef.com/products/accessories)



## Contents

### Merrychef eikon® range

p 4-5

**eikon® e1s**  
and **eikon® e2s**

p 6-7

**eikon® e4**  
and **eikon® e4s**

p 8-9

**eikon® e3**  
and **eikon® e5**

p 10-11

### Signature range

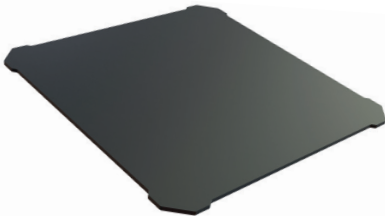
The essential moulded accessories you should never be without. Ideal for cooking specific foods like poaching eggs, baking cakes and heating soups.



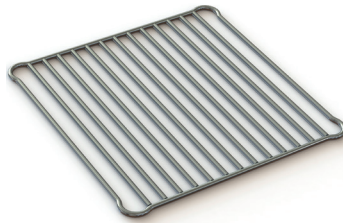
# Merrychef eikon® e1s and eikon® e2s



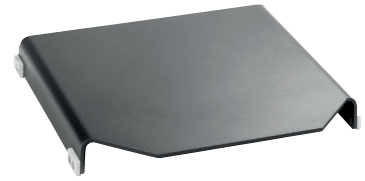
▷ **Flat cook plate**  
H4 x W304 x D304 mm  
Part no: **DC0322**  
*Available for e1s only.*



▷ **Wire rack**  
H6 x W304 x D304 mm  
Part no: **DC0327**  
*Available for e1s only.*



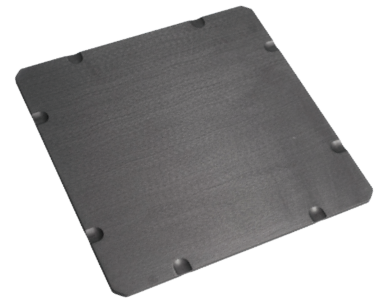
▷ **Flat cook plate**  
H42 x W308 x D306 mm  
Part no: **PSB3108**  
*Available for e2s only.*  
*Ovens purchased before January 2019.*



▷ **Griddled cook plate**  
H42 x W308 x D306 mm  
Part no: **PSB3117**  
*Available for e2s only.*  
*Ovens purchased before January 2019.*



▷ **Flat cook plate**  
H6 x W300 x D300 mm  
Part no: **DB0739**  
*Available for e2s only.*  
*Ovens purchased from January 2019.*



▷ **Griddled cook plate**  
H6 x W300 x D300 mm  
Part no: **DB0719**  
*Available for e2s only.*  
*Ovens purchased from January 2019.*



▷ **Cool down pan**  
1/4 size 65 mm deep  
Part no: **32Z4079**



▷ **Paddle with hand guard and sides**

W298 x D300 mm

Part no: **SR318**



▶ **Non-stick cooking liner**

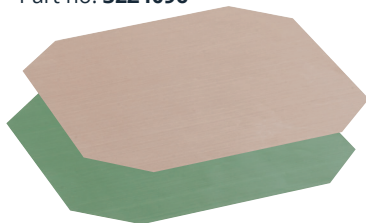
W285 x D285 mm

**(Natural)**

Part no: **32Z4088**

**(Green)**

Part no: **32Z4096**



▶ **Full size cooking tray**

H13 x W279 x D279 mm

**(Black)**

Part no: **32Z4080**

**(Red)**

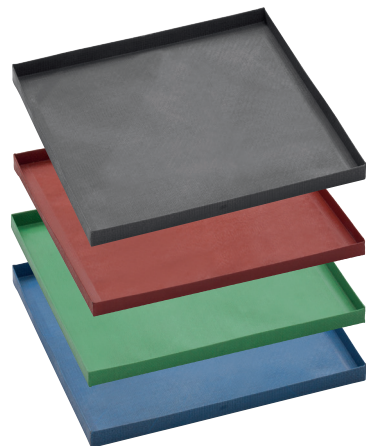
Part no: **32Z4100**

**(Green)**

Part no: **32Z4093**

**(Blue)**

Part no: **32Z4101**



▶ **Half size cooking tray**

H13 x W279 x D140 mm

**(Black)**

Part no: **32Z4090**

**(Green)**

Part no: **32Z4094**



▶ **Quarter size cooking tray**

H13 x W140 x 140 mm

**(Black)**

Part no: **32Z4089**

**(Red)**

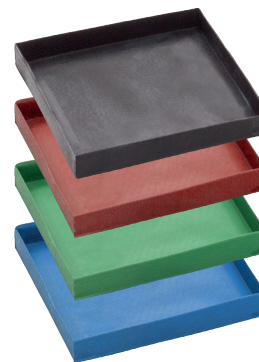
Part no: **32Z4123**

**(Green)**

Part no: **32Z4095**

**(Blue)**

Part no: **32Z4125**



▶ **Half size deeper cooking tray**

H25 x W279 x D178 mm

**(Red)**

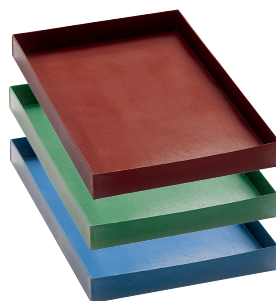
Part no: **32Z4097**

**(Green)**

Part no: **32Z4098**

**(Blue)**

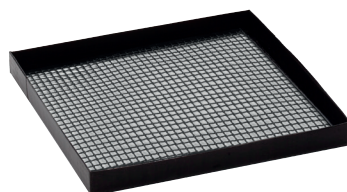
Part no: **32Z4099**



▶ **Full size mesh cooking tray**

H13 x W279 x D279 mm

**(Black)** Part no: **32Z4081**



▷ **Moveable oven trolley**

H1090 x W469 x D636 mm

Part no: **SR329**



▷ **Rear oven panel for added aesthetics**

H50 x W591 x D355 mm

**(Black)**

Part no: **PSB248**

**(Red)**

Part no: **PSB247**

**(Stainless steel)**

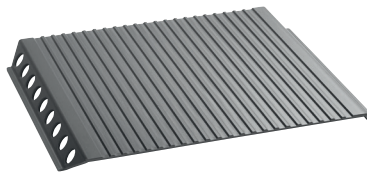
Part no: **PSB272**

*Available for e2s only.*

Merrychef  
eikon® e4 and  
eikon® e4s



- ▷ **Gridded cook plate**  
H26 x W369 x D305 mm  
Part no: **DV0860**



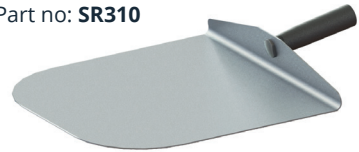
- ▷ **Paddle with hand guard and sides**  
W328 x D311 mm  
Part no: **SR320**



- ▷ **Vitreous baking/roasting tray**  
H25 x W321 x D297 mm  
Part no: **DX0117**



- ▷ **Paddle without sides**  
W328 x D311 mm  
Part no: **SR310**



- ▷ **Tray handle for use with DX0117**  
H25 x W264 x D91 mm  
Part no: **SR313**



- ▷ **Non-stick baking/roasting tray**  
H15 x W300 x D271 mm  
Part no: **40H0230**



- ▷ **Moveable oven trolley**  
H1200 x W700 x D690 mm  
Part no: **40H0098**



- ▷ **Non-stick roasting tray liner**  
W277 x D236 mm  
Part no: **DX0254**

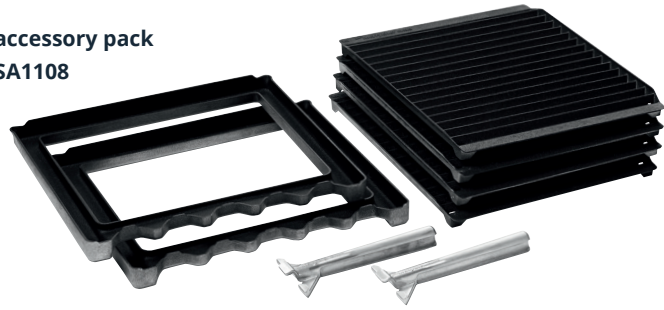


- ▷ **Cool down pan**  
1/2 size 100 mm deep  
Part no: **32Z4028**



# Merrychef eikon® e4 only

▷ Griddled accessory pack  
Part no: **PSA1108**



▷ Tray handle for use with PSA1108  
H25 x W250 x D76 mm  
Part no: **DV0344**



▷ Flat cook plate  
H26 x W369 x D305 mm  
Part no: **PSA1248**



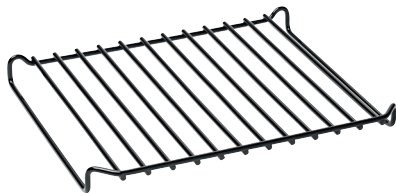
▷ 4x cook plates ideal for grilling  
and higher protein food  
H25 x W346 x D279 mm  
Part no: **PSA299**



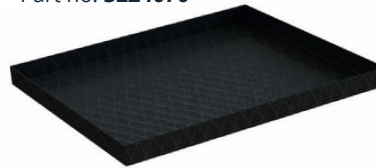
▷ Frame for PSA299 to catch grease  
H30 x W340 x D296 mm  
Part no: **DV0343**



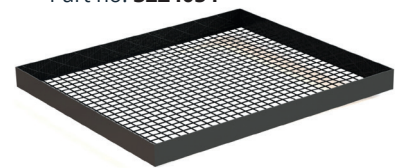
▷ Wire rack  
H32 x W362 x D290 mm  
Part no: **PDV0907**



▷ Solid base tray full size  
H25 x W356 x D305 mm  
**(Black)**  
Part no: **32Z4070**

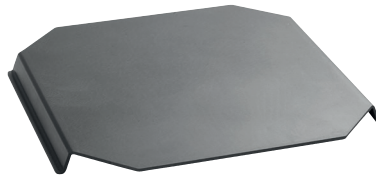


▷ Mesh tray full size  
H25 x W343 x D292 mm  
**(Black)**  
Part no: **32Z4054**

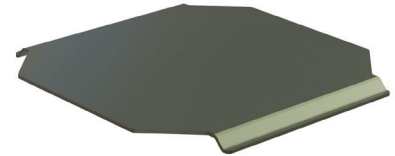


# Merrychef eikon® e4s only

▷ Flat cook plate  
H25 x W371 x D355 mm  
Part no: **DV0870**



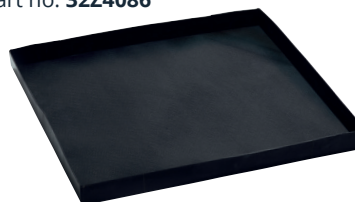
▷ Cook plate ideal for pizzas  
H16 x W371 x D355 mm  
Part no: **DV0880**



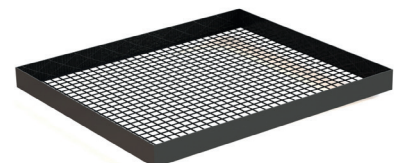
▷ Wire rack  
H36 x W366 x D344 mm  
Part no: **PDV0908**



▷ Solid base tray full size  
H25 x W343 x D343 mm  
**(Black)**  
Part no: **32Z4086**



▷ Mesh tray full size  
H25 x W343 x D292 mm  
**(Black)**  
Part no: **32Z4054**



# Merrychef eikon® e3



- ▷ **Non-stick tray ideal for baking/roasting**  
H15 x W300 x D271 mm  
Part no: **40H0230**



- ▷ **Moveable oven trolley**  
H1200 x W700 x D690 mm  
Part no: **40H0098**



- ▷ **Tray handle is compatible with 40H0347 and DX0117**  
H25 x W264 x D91 mm  
Part no: **SR313**



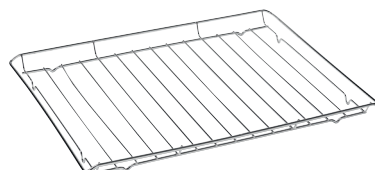
- ▷ **Enamel tray ideal for baking/roasting**  
H25 x W321 x D297 mm  
Part no: **DX0117**



- ▷ **Non-stick roasting tray liner**  
W277 x D236 mm  
Part no: **DX0254**



- ▷ **Wire rack**  
H30 x W323 x D275 mm  
Part no: **DR0056**



- ▷ **Turn-table disk for use with 40H0347**  
Ø 191 mm  
Part no: **40H0249**



- ▷ **Flat turn-table plate**  
H40 mm x Ø 312 mm  
Part no: **40H0347**



- ▷ **Gridded insert for turn-table plate**  
H25 mm x Ø 312 mm  
Part no: **40H0240**



- ▷ **Non-stick cooking liner**  
Ø 287 mm  
**(Natural)**  
Part no: **40H0190**



- ▷ **Cool down pan**  
1/6 size 150 mm deep  
Part no: **32Z4043**

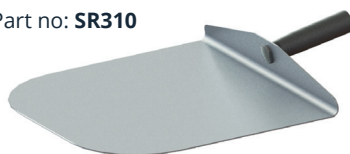




Merrychef  
eikon® e5



▷ Paddle without sides  
W328 x D311 mm  
Part no: **SR310**



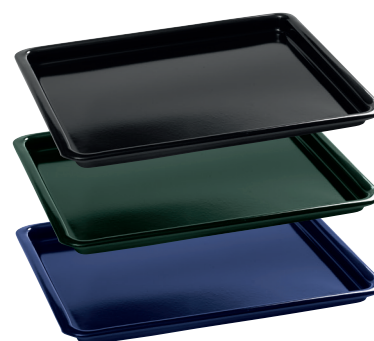
▷ Tray handle for use with  
**P40C1423/P40C1151/P40C1157**  
H25 x W264 x D91 mm  
Part no: **SR313**



▷ Paddle with hand guard and sides  
W328 x D311 mm  
Part no: **SR320**



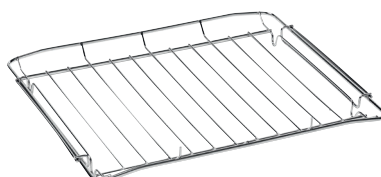
▷ Enamel baking/roasting tray  
H25 x W432 x D336 mm  
**(Black)**  
Part no: **P40C1423**  
**(Green)**  
Part no: **P40C1151**  
**(Blue)**  
Part no: **P40C1157**



▷ Cool down pan  
1/2 size 100 mm deep  
Part no: **32Z4028**



▷ Wire rack  
H32 x W435 x D332mm  
Part no: **DR0057**



▷ Non-stick roasting tray liner  
W390 x D295 mm  
Part no: **40C1218**



# Signature range

The **NEW** Signature range will suit most of our ovens to provide you with the broadest range of applications and are highly durable, long-lasting and dishwasher compatible.

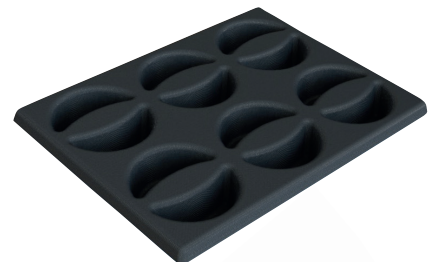
- ▷ **Small bowl**  
H35.6 x Ø 180 mm  
Part no: **32Z4115**



- ▷ **1/2 ltr container**  
H63.5 x W172.7 x D175.3 mm  
Part no: **32Z4119**



- ▷ **12x dumpling tray**  
H31.7 x W279 x D279 mm  
Part no: **32Z4116**  
*Not suitable for e3.*



- ▷ **Tongs**  
Part no: **32Z4156**



- ▷ **Spatula**  
H100 x W79 x D300 mm  
Part no: **32Z4034**



▷ **2x non-stick mould**  
H4 x W304 x D304 mm  
Part no: **32Z4126**



▷ **4x non-stick mould**  
H20.3 x W254 x D254 mm  
Part no: **32Z4113**  
*Not suitable for e3.*



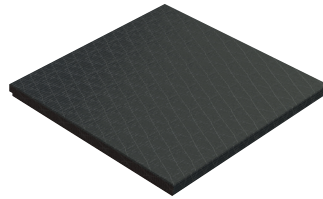
▷ **9x non-stick mould**  
H20.3 x W279 x D279 mm  
Part no: **32Z4132**  
*Not suitable for e3.*



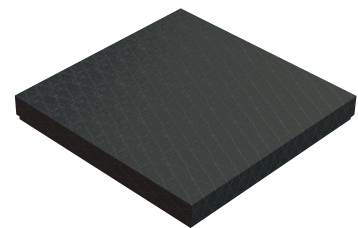
▷ **12x non-stick mould**  
H20.3 x W368 x D279 mm  
Part no: **32Z4131**  
*Not suitable for e1s/e2s/e3.*



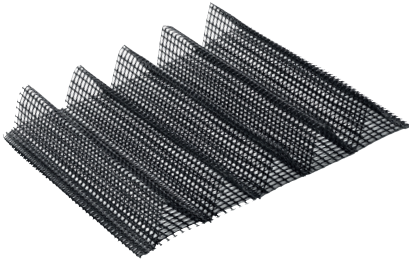
▷ **Small lidded solid tray**  
H19.0 x W294.6 x D294.6 mm  
Part no: **32Z4134**  
*Not suitable for e3.*



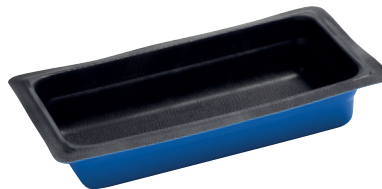
▷ **Large lidded solid tray**  
H35 x W358.1 x D307.3 mm  
Part no: **32Z4133**  
*Not suitable for e1s/e2s/e3.*



▷ **Air frying tray**  
H50 x W280 x D280 mm  
**(Black)** Part no: **32Z4032**  
*Not suitable for e3.*



▷ **1 ltr container**  
H63.5 x W325.1 x D175.3 mm  
Part no: **32Z4118**  
*Not suitable for e1s/e2s/e3.*



▷ **Large cook tray**  
H22.9 x W355.6 x D298.5 mm  
Part no: **32Z4128**  
*Not suitable for e1s/e2s/e3.*



▷ **Oven cleaner**  
6 x 750ml (1box)  
Part no: **32Z4024**



▷ **Oven protector**  
6 x 750ml (1box)  
Part no: **32Z4025**

## Merrychef oven cleaner and protector

Your Merrychef oven should be cleaned every day to maintain and keep it running smoothly. Our specially formulated cleaner is nonabrasive and if used regularly, will quickly cut through any grease or food debris built up on your Merrychef oven.

After cleaning we recommend you thinly coat your oven with the Merrychef oven protector to provide a barrier against further build-up of grease and make regular cleaning quicker and easier.

## ALL Merrychef accessories are:

- ✔ Made from compatible materials for high speed ovens, either 100% PTFE or specifically coated in a material that reduces or eliminates oven arcing which may occur with unapproved metal accessories.
- ✔ Easy to wipe clean in-between programmes and dishwasher safe.
- ✔ Durable and long lasting.

## Do's and Don'ts:

- ✔ **Do** use approved Merrychef accessories in your oven which have all been safety tested.
- ✔ **Do** Cook food on an accessory or oven liner and not directly on the cook plate to avoid the build-up of grease and food in your oven.
- ✔ **Do** wipe clean the accessories after every use to avoid any cross contamination, using coloured trays for specific foods, where available.
- ✘ **Don't** use unapproved accessories with your Merrychef oven, they may cause damage and **will invalidate your warranty**, particularly if they are uncoated metal.
- ✘ **Don't** use the cool pans that are provided with Merrychef ovens to cook with. They have been designed to hold ice to speed up the cooling down process prior to cleaning your oven.

Merrychef accessories can be purchased from your local dealer, or to find a supplier go to:  
[www.merrychef.com/Sales/Sales-Locators](http://www.merrychef.com/Sales/Sales-Locators)



Welbilt offers fully-integrated kitchen systems and our products are backed by KitchenCare® aftermarket parts and service. Welbilt's portfolio of award-winning brands includes Cleveland™, Convotherm®, Crem®, Delfield®, fitkitchen<sup>SM</sup>, Frymaster®, Garland®, Kolpak®, Lincoln™, Manitowoc®, Merco®, Merrychef® and Multiplex®.

*Bringing innovation to the table* • [welbilt.com](http://welbilt.com)